

coraline

sweet cuddle



Print the PDF in high quality, keeping the actual size. If your printer allows it, select the "borderless" printing option for a more precise result. For optimal quality, we recommend using a professional print shop.

BOXES + ELEMENTS: print on cardstock of approx. 250 g/m². Cut along the outline, including the white and black slits (without cutting all the way through). Fold along the dashed lines and glue the side tabs to assemble the two parts. Cut and fold the bands (you'll find it on the BOX ELEMENT page 1 or 2), insert them into the larger slit on the lid, and glue the tag with strong glue or hot glue. Finally, insert the TAG (with or without text) into the side slit, push it all the way in, and secure the band with a drop of glue.

TAG: print on cardstock of approx. 250 g/m², cut along the outline, and glue onto short skewers to use as cupcake toppers, on biodegradable straws, or as decorations for the snack bands.

SNACK WRAPS: print on light paper (90–130 g/m²), cut to fit your chosen snack, wrap it around, and secure with glue. Apply the tag in the center.

JUICE LABELS: print on adhesive paper or on paper of 90–130 g/m² and attach to the juice bottles using double-sided tape.

BANNER: print on cardstock of approx. 250 g/m². Print multiple copies depending on the desired length. Punch a hole at the top of each piece to thread the string through or attach the string to the back with tape.

CAKETOPPER: print on cardstock of approx. 250 g/m² and glue the elements onto long skewers.

BACKDROP: print on cardstock of approx. 250 g/m². Cut along the outline and attach the pieces using thick double-sided tape, layering them to create depth. You can also choose to print in A3 format.

DO NOT PRINT THIS PAGE! REMEMBER TO SELECT AND PRINT ONLY THE PAGES YOU NEED. DO NOT WASTE PAPER AND INK.

CONFIDENTIALITY AND NON-DISCLOSURE CLAUSE: *all graphics in this kit are the property of Coraline Sweet Cuddle. By receiving this digital file, you are granted a personal use license only. This means you are not allowed to send it by email, sell it, or use it for any commercial purposes. This item may not be modified, reproduced, or distributed in any form. Any use, even partial, will constitute copyright infringement and will be prosecuted under applicable law, including penalties and compensation for damages.*

If you run a business and would like to use Coraline Sweet Cuddle work, please contact: coralinesweetcuddle@gmail.com.

If you use Coraline Sweet Cuddle's creations and feel like sharing, post a story or a photo on Instagram and/or Facebook and tag [@coraline.sweetcuddle](https://www.instagram.com/coraline.sweetcuddle). Share the creativity!

www.coralinesweetcuddle.com
coralinesweetcuddle@gmail.com

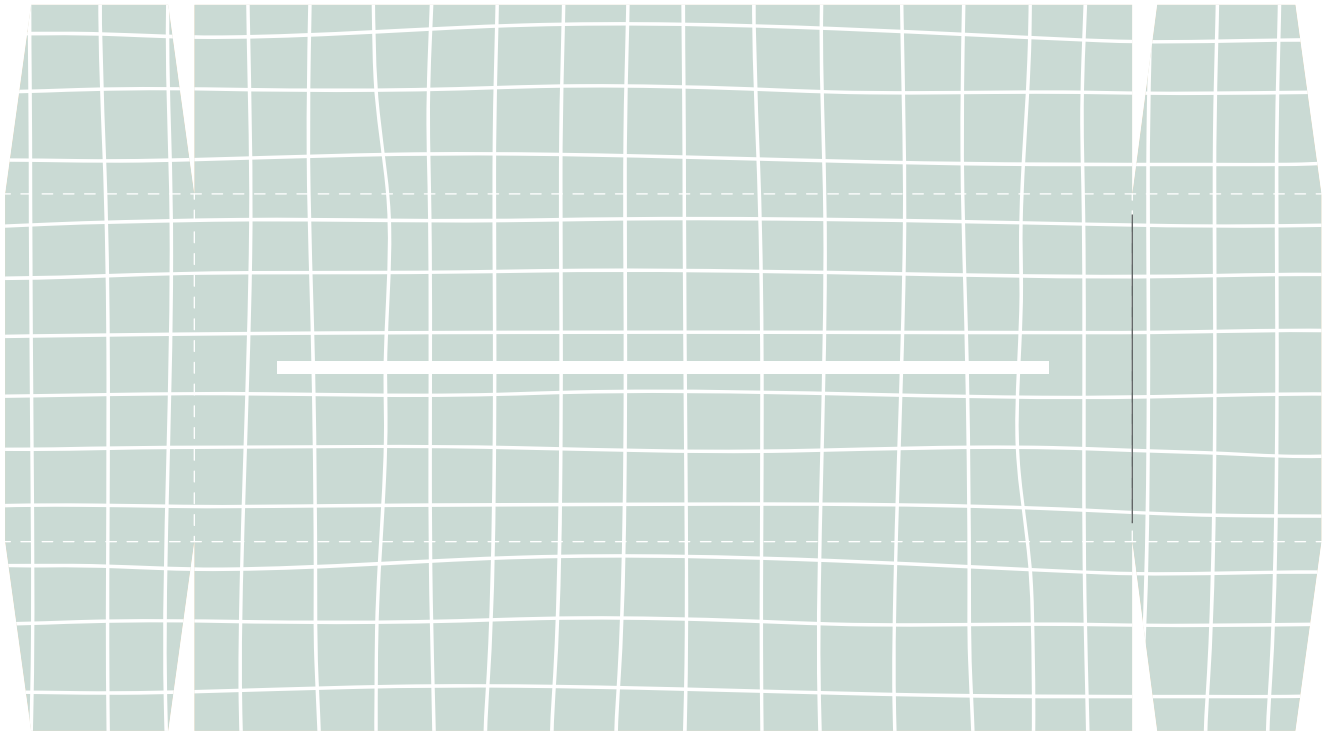


[@coraline.sweetcuddle](https://www.instagram.com/coraline.sweetcuddle)





BOX 1



coraline
sweet cuddle



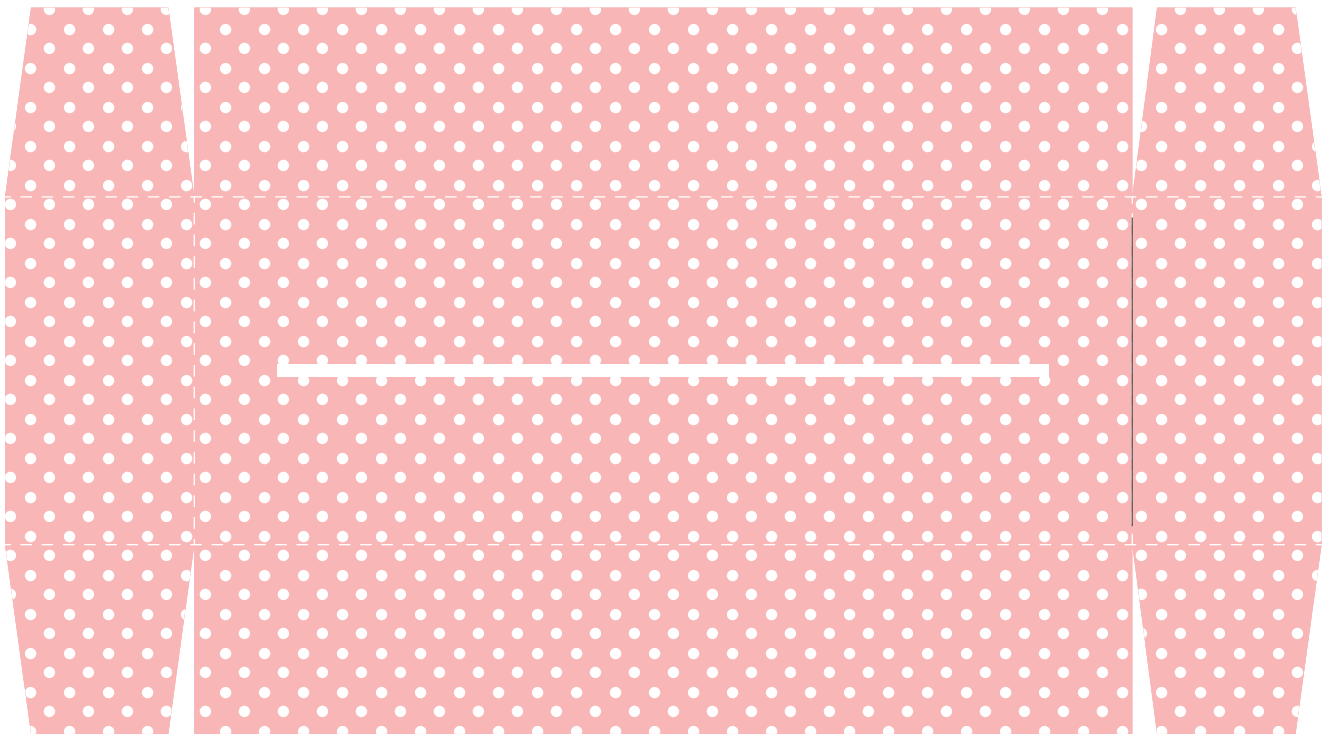
BOX 2



coraline
sweet cuddle



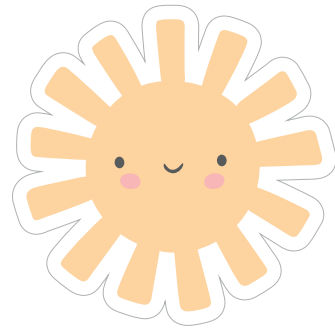
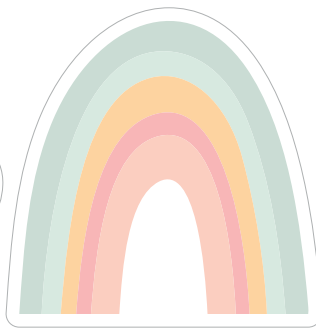
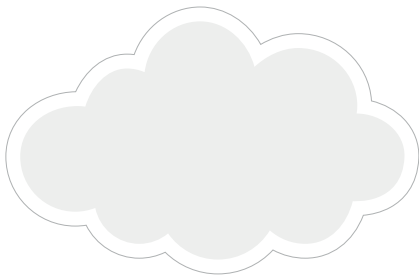
BOX 3



coraline
sweet cuddle

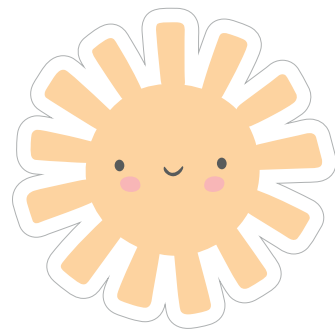
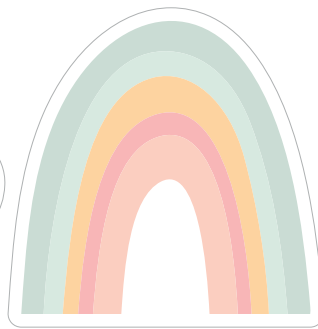
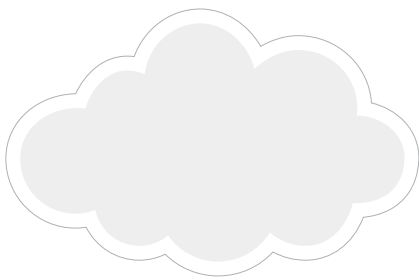


BOX ELEMENTS 1



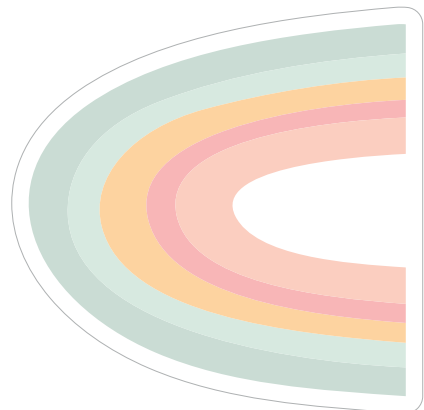
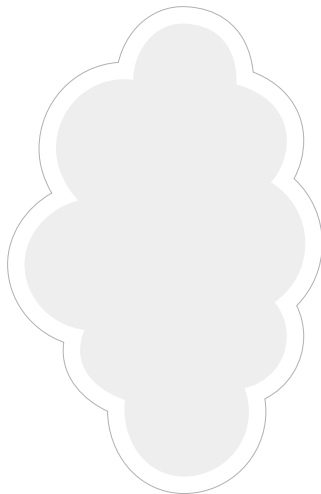
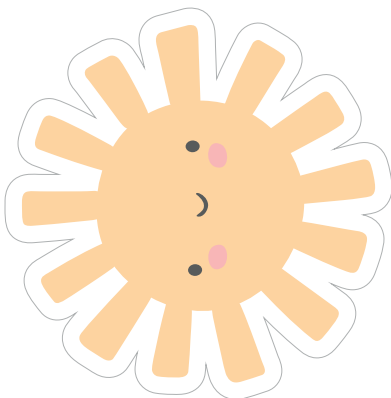
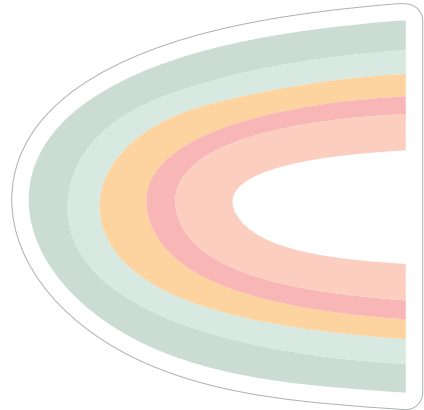
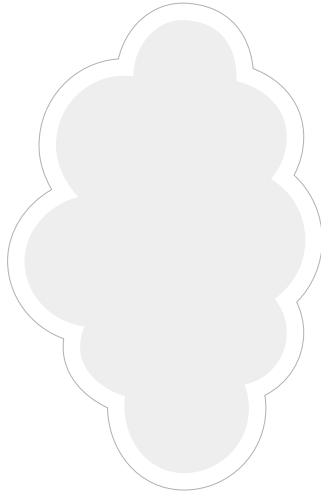
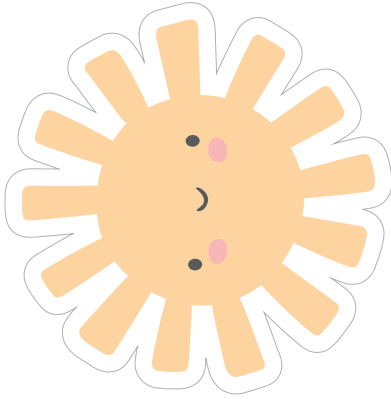
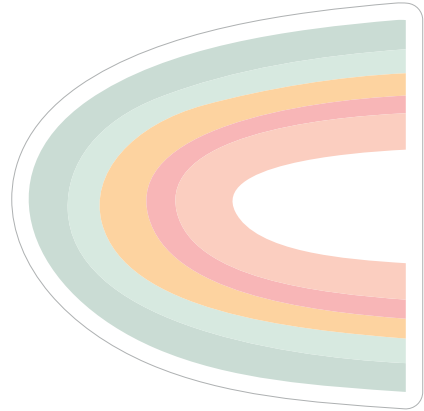
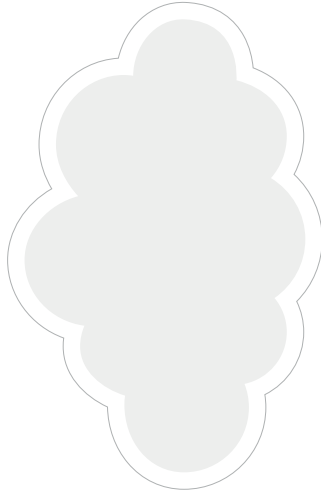
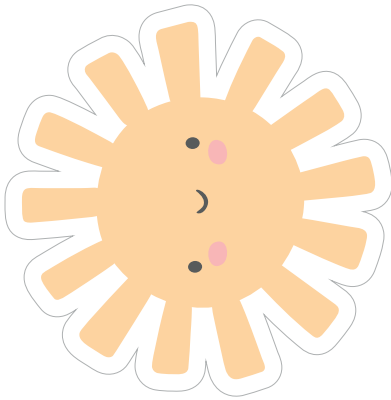


BOX ELEMENTS 2





TAG (for cupcakes/straws/wraps)





SNACK WRAP

A large rectangular area filled with horizontal orange lines, intended for writing a list of items to be wrapped.

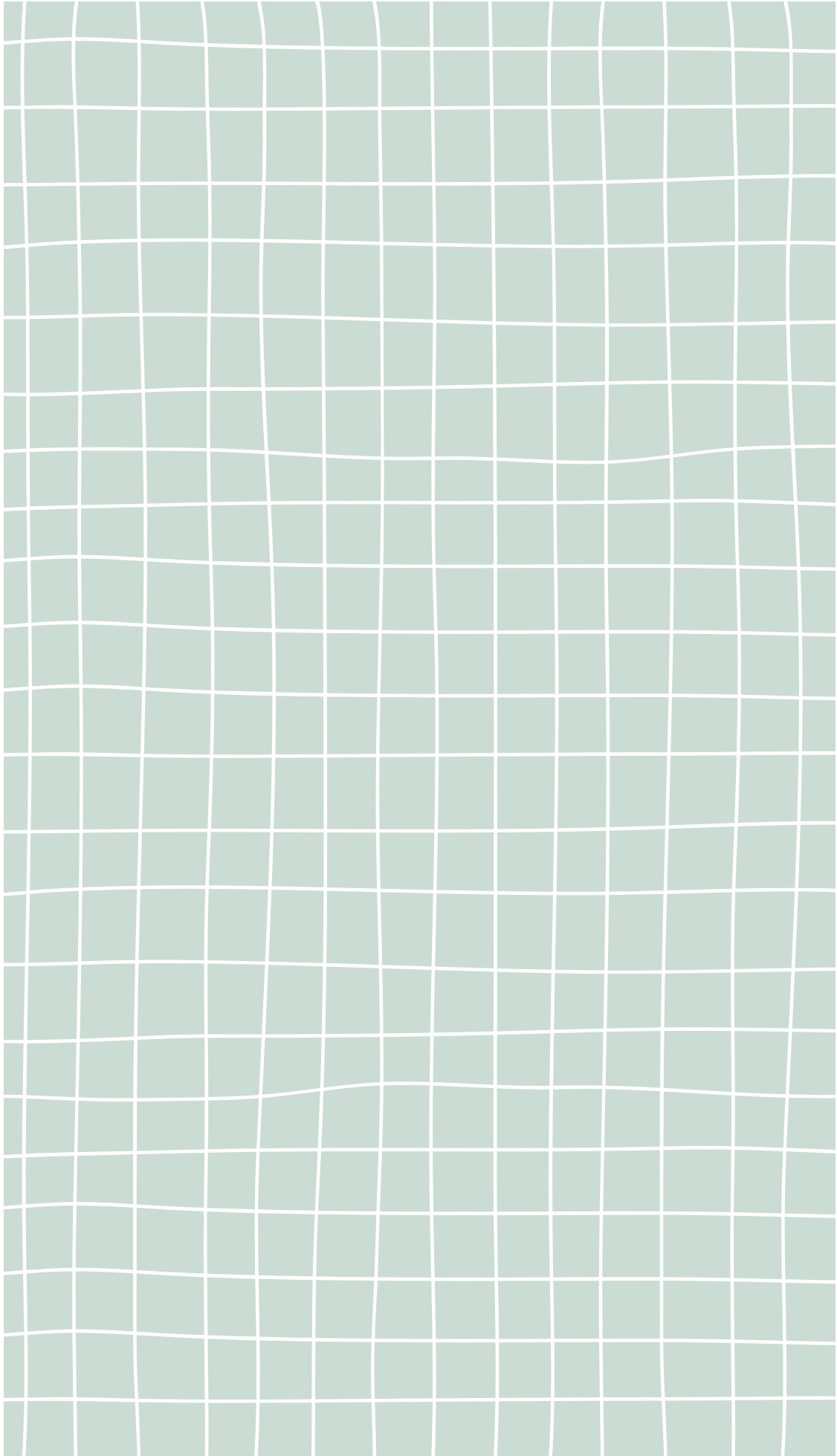


SNACK WRAP



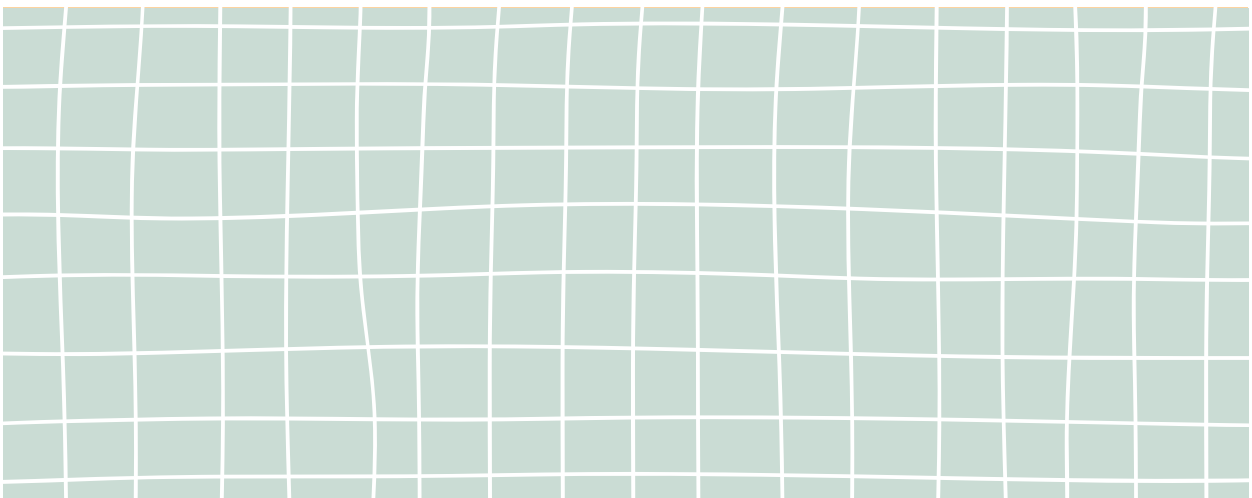
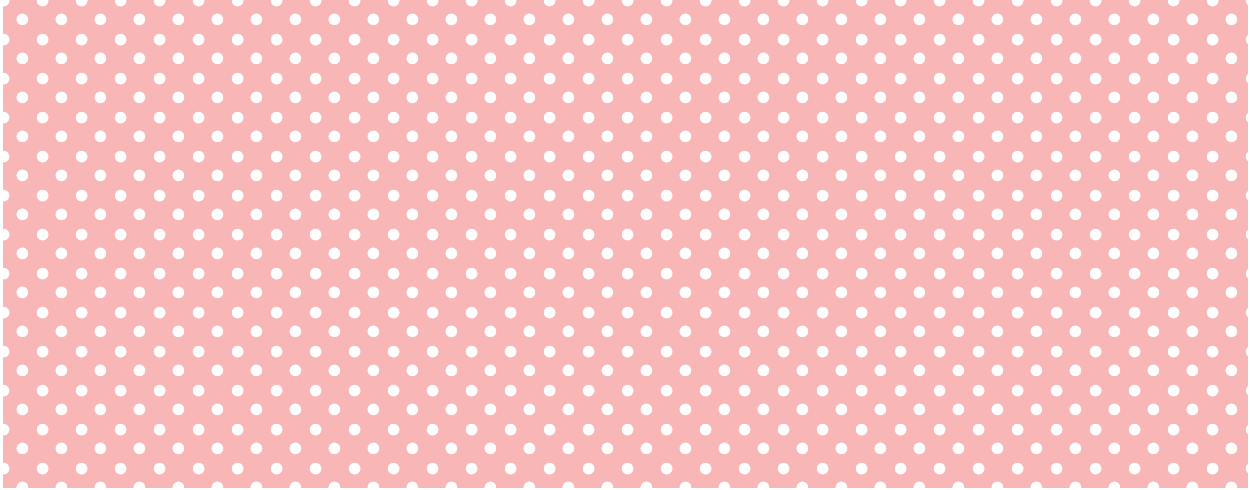


SNACK WRAP



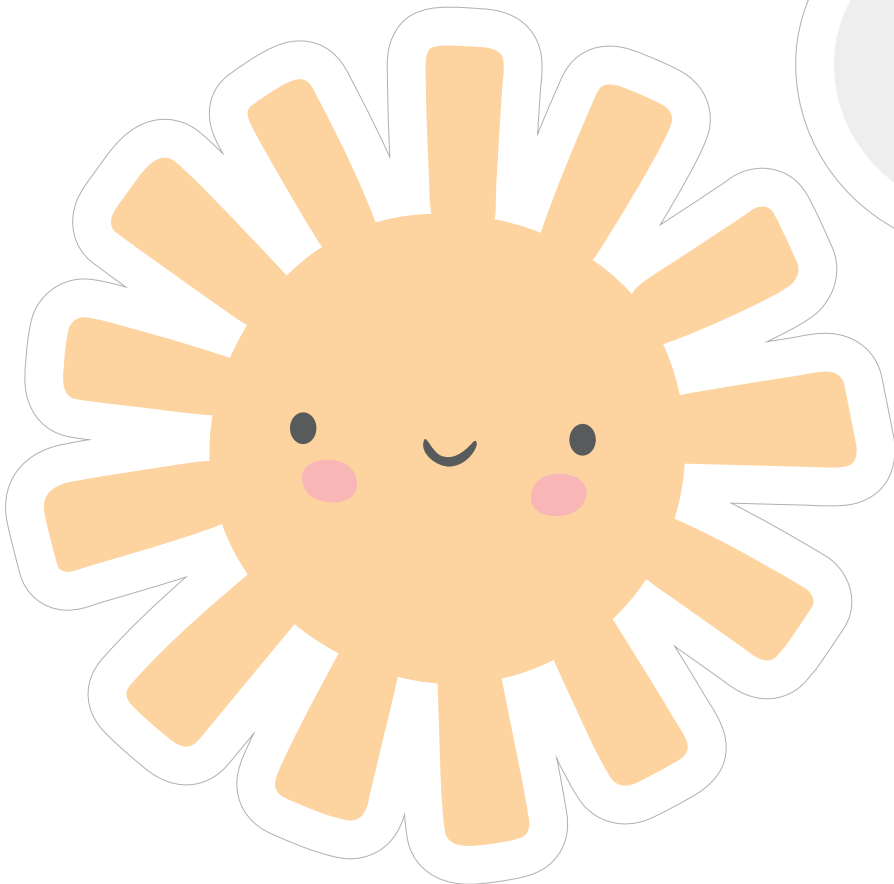
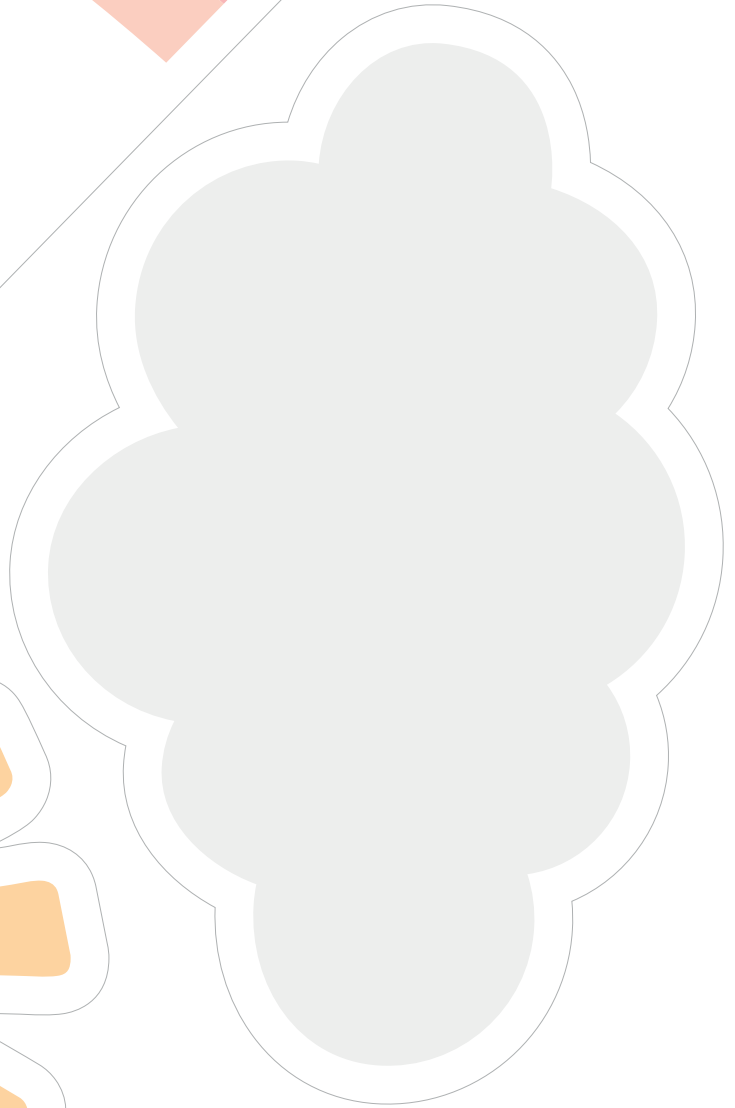
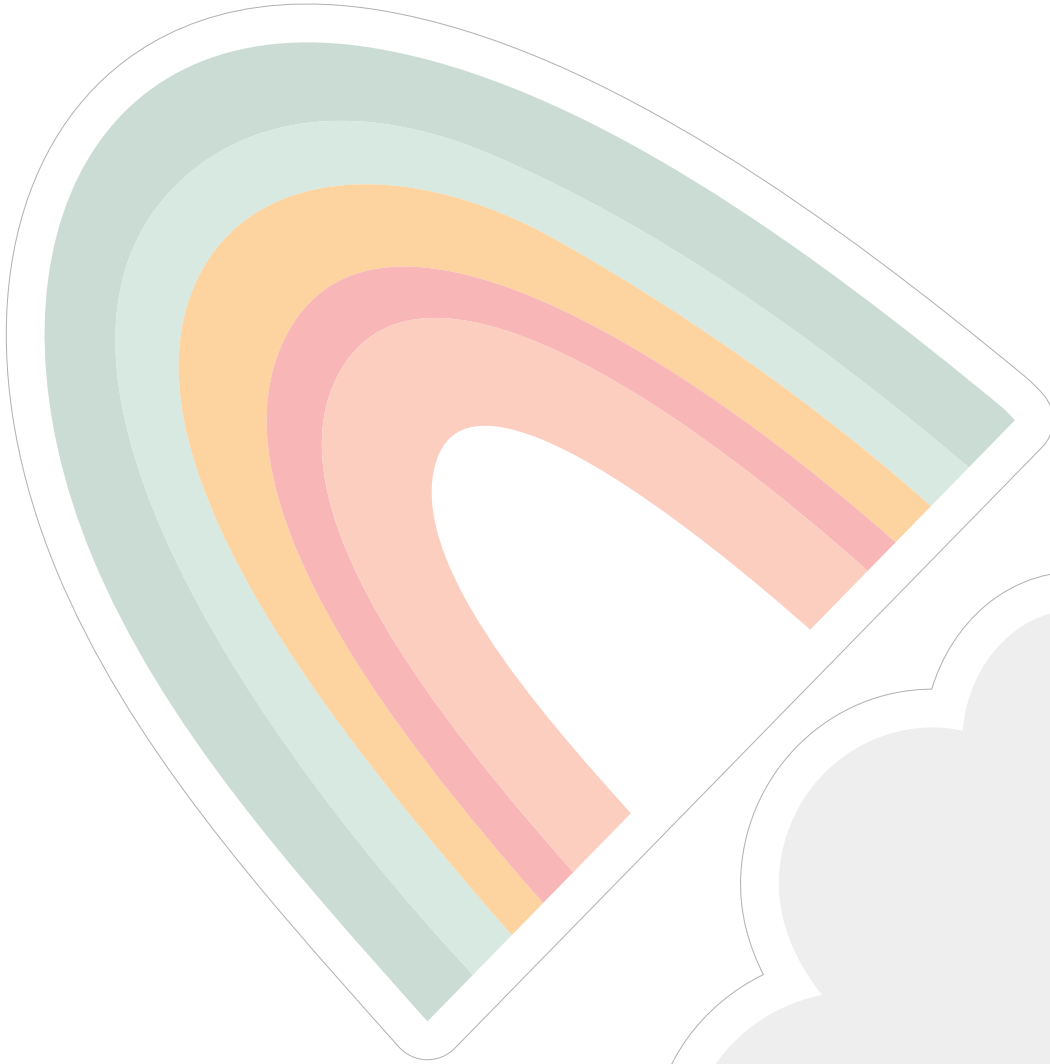


JUICE LABELS



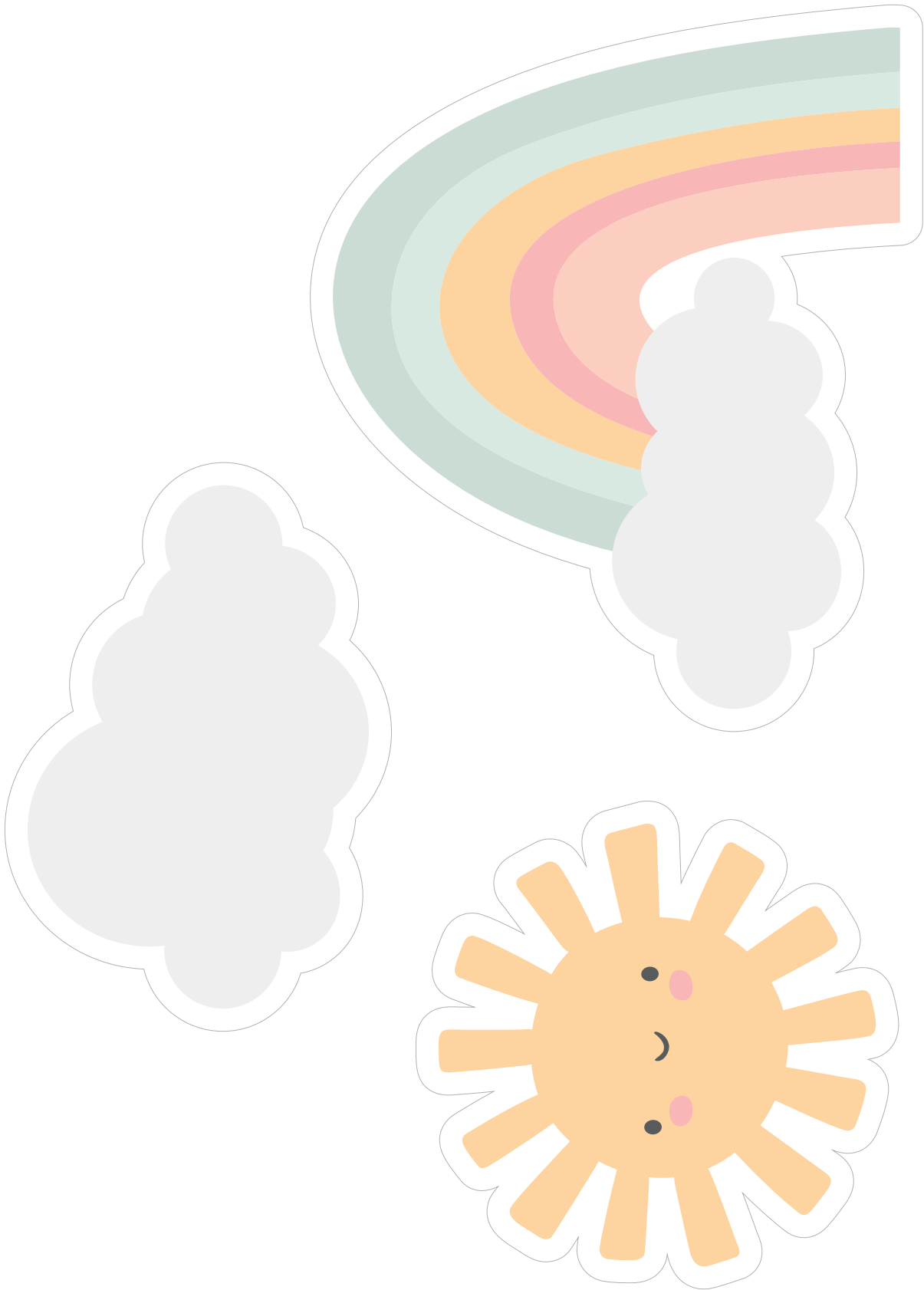


BANNER



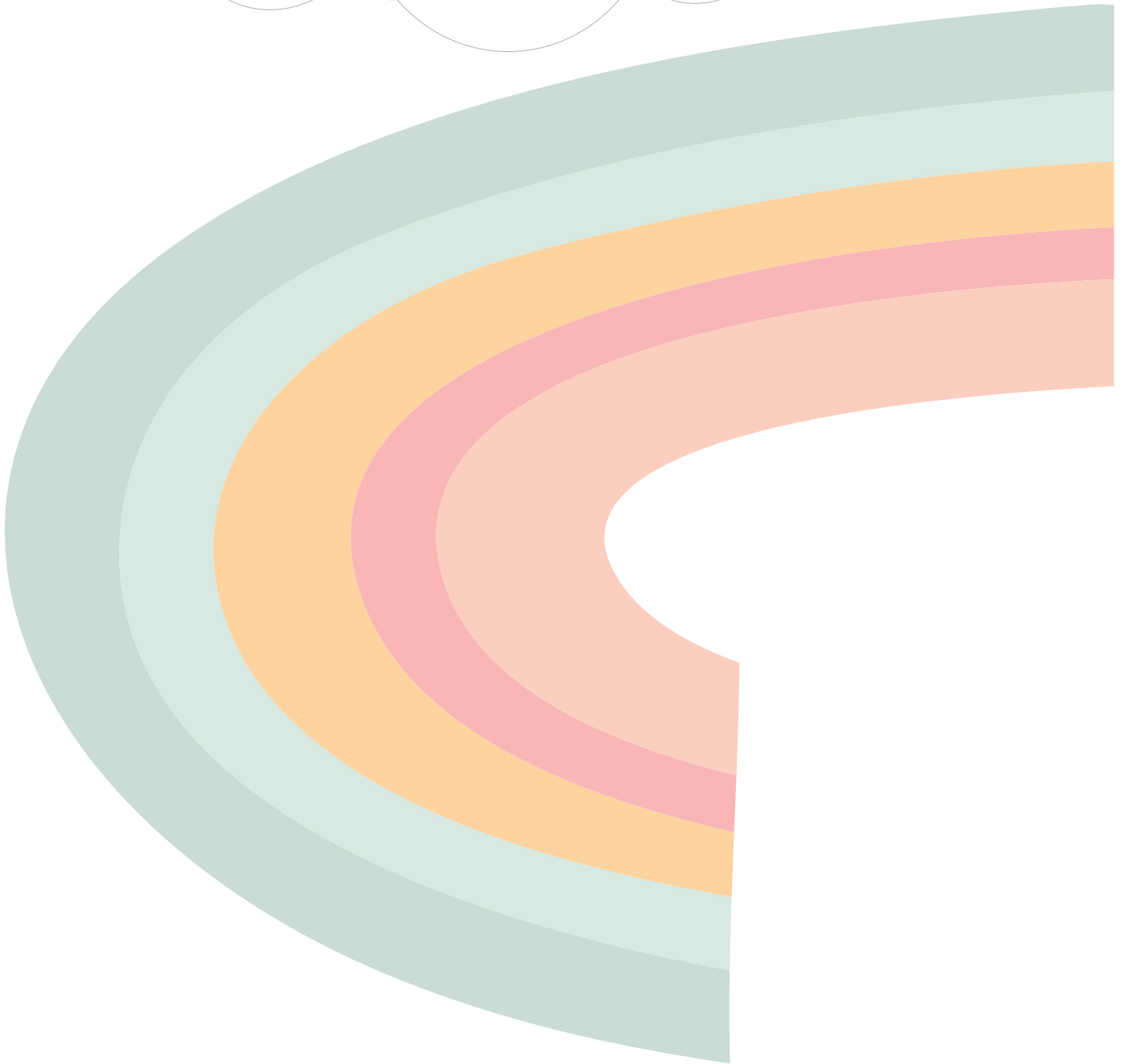


CAKE TOPPER



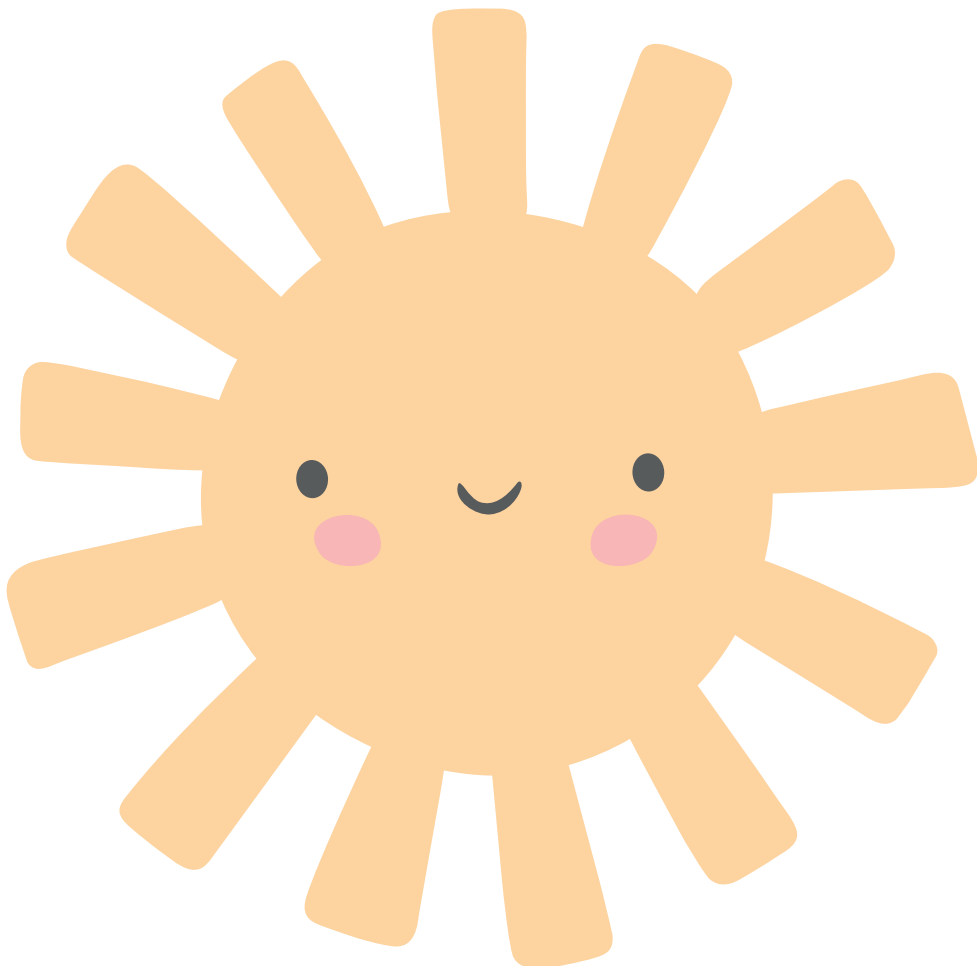
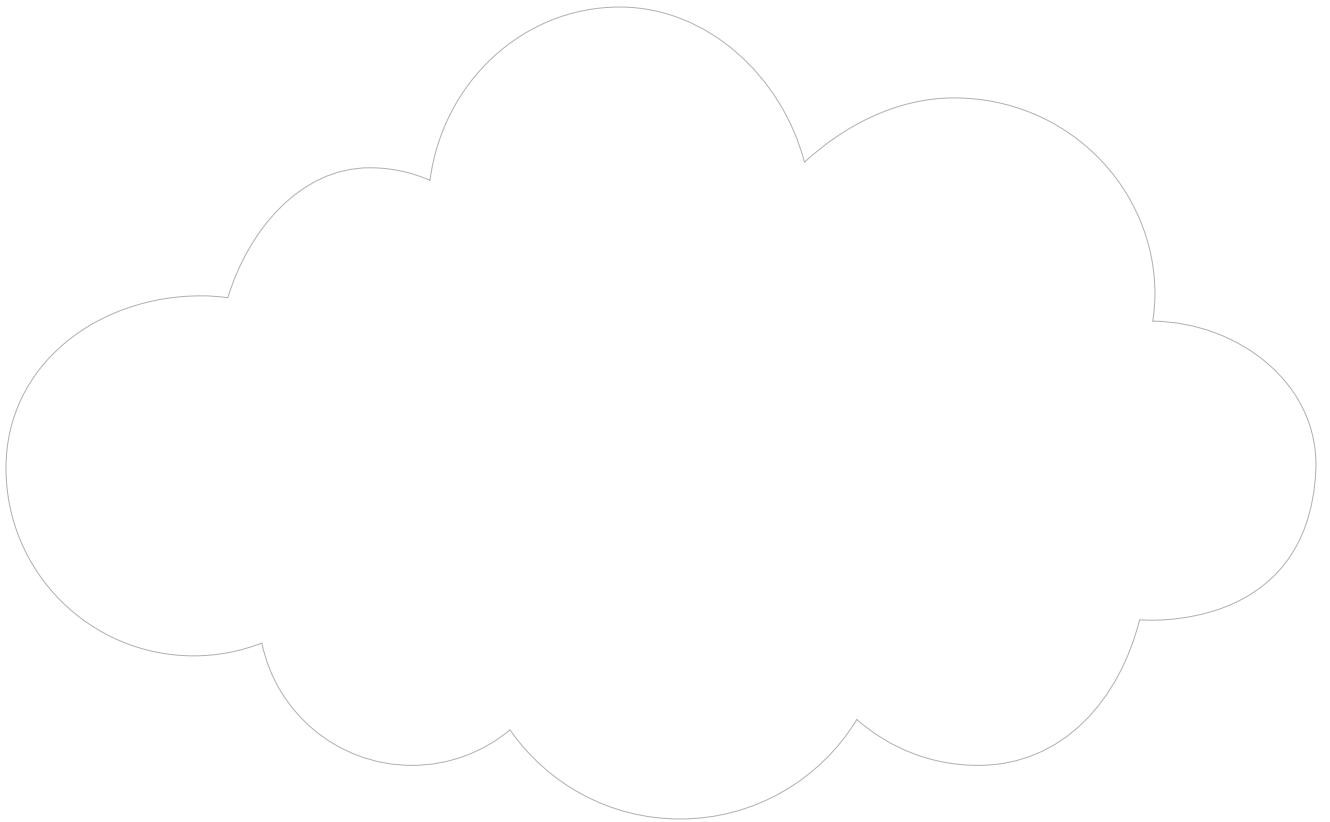


BACKDROP SHAPES



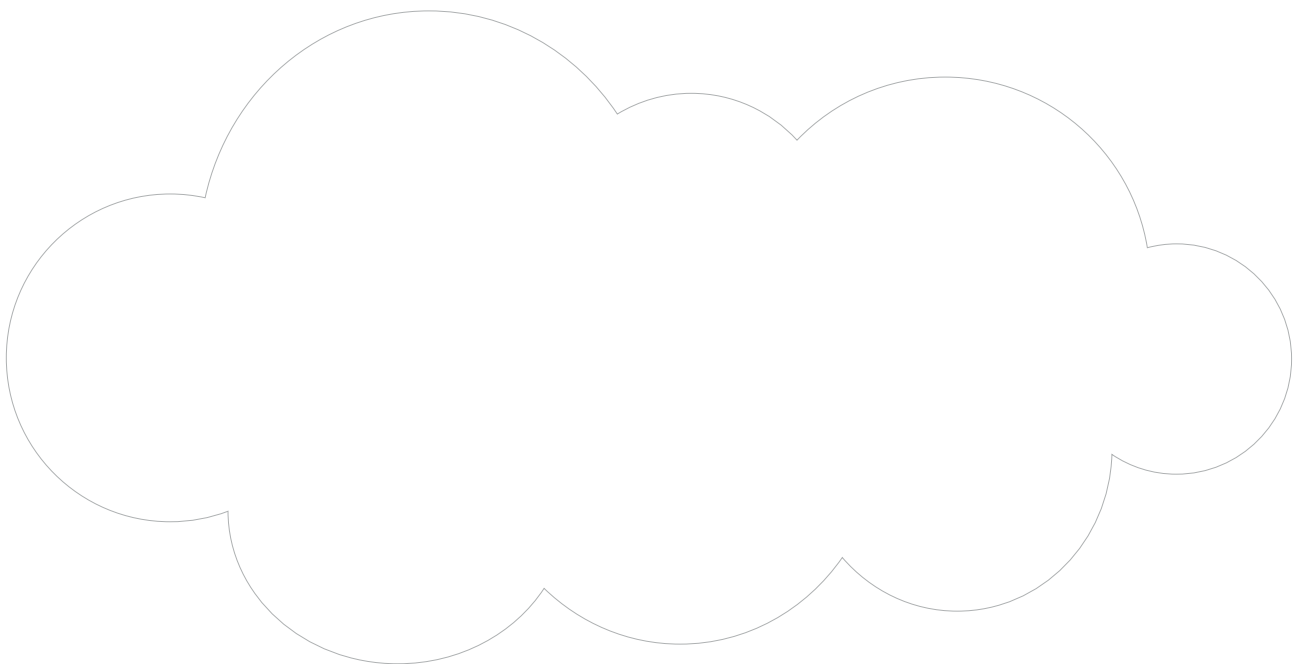


BACKDROP SHAPES





BACKDROP SHAPES





Coraline Sweet Cuddle di Clementina Pompili

P.IVA: 10603060962
C.F. PMPCMN87M59F2050
CODICE SDI: KRRH6B9
PEC: clementinapompili@pec.it
coralinesweetcuddle@gmail.com
www.coralinesweetcuddle.com

CONFIDENTIALITY AND NON-DISCLOSURE CLAUSE: all graphics in this kit are the property of Coraline Sweet Cuddle. By receiving this digital file, you are granted a personal use license only. This means you are not allowed to send it by email, sell it, or use it for any commercial purposes. This item may not be modified, reproduced, or distributed in any form. Any use, even partial, will constitute copyright infringement and will be prosecuted under applicable law, including penalties and compensation for damages.